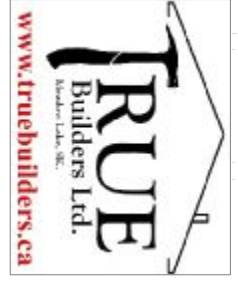
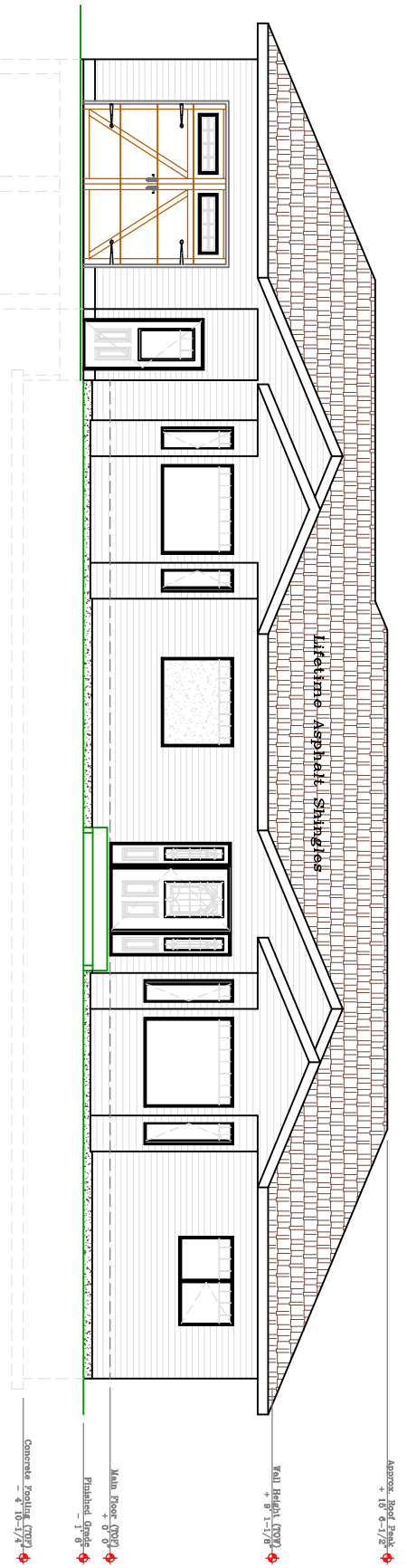


Approx. Roof Peak  
+ 16'-6-1/2"

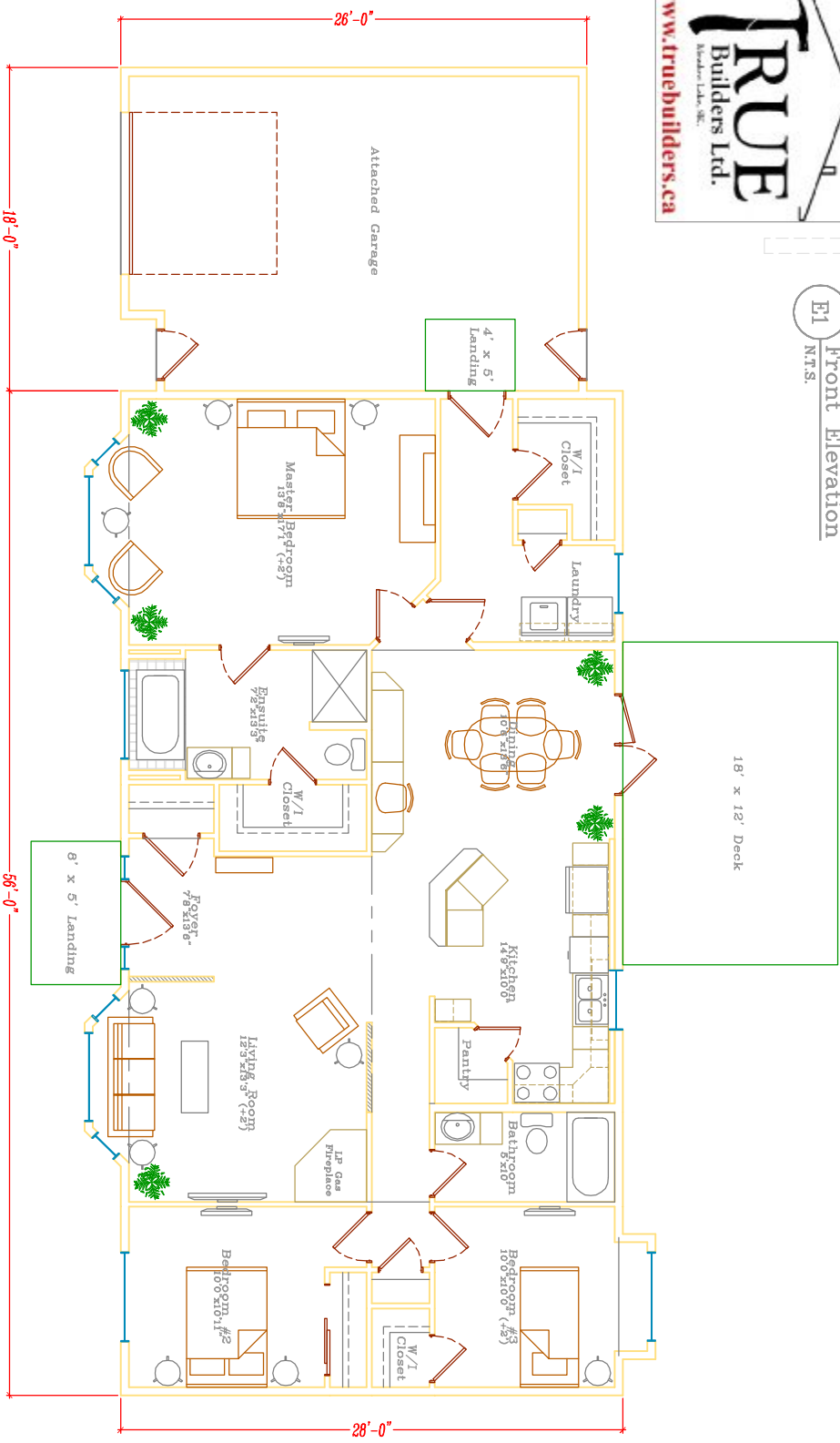
Wall Height (TYP)  
+ 8'-1-1/8"

Main Floor (TYP)  
+ 0'-0"

Concrete Footing (TYP)  
- 4'-10-1/4"



E1  
N.T.S.  
Front Elevation



P1  
1613 sq.ft.  
Prelim Main Level